

PLAN
"JARDIN DRIVE"

MATCH LINE BELOW

- NOTES**
- FOR GENERAL NOTES, SEE DRAWING NO. GN-1.
 - CONFORM NEW IMPROVEMENTS TO EXISTING EDGE OF PAVEMENTS OR AT LIP OF GUTTER.
 - MAINTAIN MAXIMUM 2% CROSS SLOPE IN PEDESTRIAN TRAVELED WAYS.
 - CONTRACTOR SHALL BE RESPONSIBLE FOR THE PROTECTION OF ANY BENCHMARK OR MONUMENTATION. IF A BENCHMARK OR MONUMENTATION IS DISTURBED, THE CONTRACTOR SHALL HAVE A LICENSED LAND SURVEYOR RESTORE THE BENCHMARK OR MONUMENT AT THE CONTRACTOR'S EXPENSE.
 - CONTRACTOR SHALL REPLACE IN KIND ALL CITY FACILITIES DAMAGED BY PAVEMENT CONSTRUCTION OPERATIONS, INCLUDING BUT NOT LIMITED TO CURB AND GUTTER, SIDEWALK, AND ASPHALT CONCRETE PAVEMENT. ALL REPLACEMENTS SHALL BE TO CITY STANDARDS. ANY DAMAGE TO OTHER FACILITIES, UTILITIES OR PRIVATE PROPERTY SHALL BE THE SOLE RESPONSIBILITY OF THE CONTRACTOR AND SHALL BE REPLACED IN-KIND.
 - ALL STRIPING, MARKINGS AND PAVEMENT MARKERS REMOVAL TO BE PERFORMED BY THE CONTRACTOR PER THE CITY OF LOS ALTOS STANDARDS. ALL SIGNAGE REMOVAL TO BE PERFORMED BY THE CONTRACTOR PER THE CITY OF LOS ALTOS STANDARDS.
 - ALL STRIPING, MARKINGS AND PAVEMENT MARKERS INSTALLATION TO BE PERFORMED BY THE CONTRACTOR UNLESS NOTED OTHERWISE.
 - ALL SIGNAGE INSTALLATION TO BE PERFORMED BY THE CONTRACTOR UNLESS NOTED OTHERWISE.
 - ALL STRIPING, PAVEMENT MARKERS, AND MARKINGS LAYOUT (CAT-TRACKING) SHALL BE DONE BY THE CONTRACTOR PRIOR TO PLACEMENT.
 - UNLESS INDICATED OTHERWISE, ALL STRIPING, MARKING AND SIGN TYPES SHOWN ON THIS PLAN ARE PER THE LATEST CALIFORNIA MUTCD AND CALTRANS STANDARD PLANS AND SPECIFICATIONS.
 - UNLESS INDICATED OTHERWISE, NUMBER ONE LANE DIMENSIONS SHALL BE MEASURED FROM MEDIAN FACE OF CURB TO CENTER OF STRIPING WHERE MEDIAN IS PRESENT; OTHERWISE LANE DIMENSIONS SHALL BE MEASURED FROM CENTER OF STRIPING TO CENTER OF STRIPING.
 - CENTER LANE DIMENSIONS SHALL BE MEASURED FROM CENTER OF STRIPING TO CENTER OF STRIPING.
 - WHERE BIKE LANE IS NEXT TO FACE OF CURB, BIKE LANE DIMENSIONS SHALL BE MEASURED FROM CENTER OF STRIPING TO FACE OF CURB.
 - WHERE BIKE LANE IS NOT PRESENT NEXT TO FACE OF CURB, CURB LANE DIMENSIONS SHALL BE MEASURED FROM CENTER OF STRIPING TO FACE OF CURB.
 - ALL STRIPING, PAVEMENT MARKERS, AND MARKINGS SHALL BE THERMOPLASTIC.

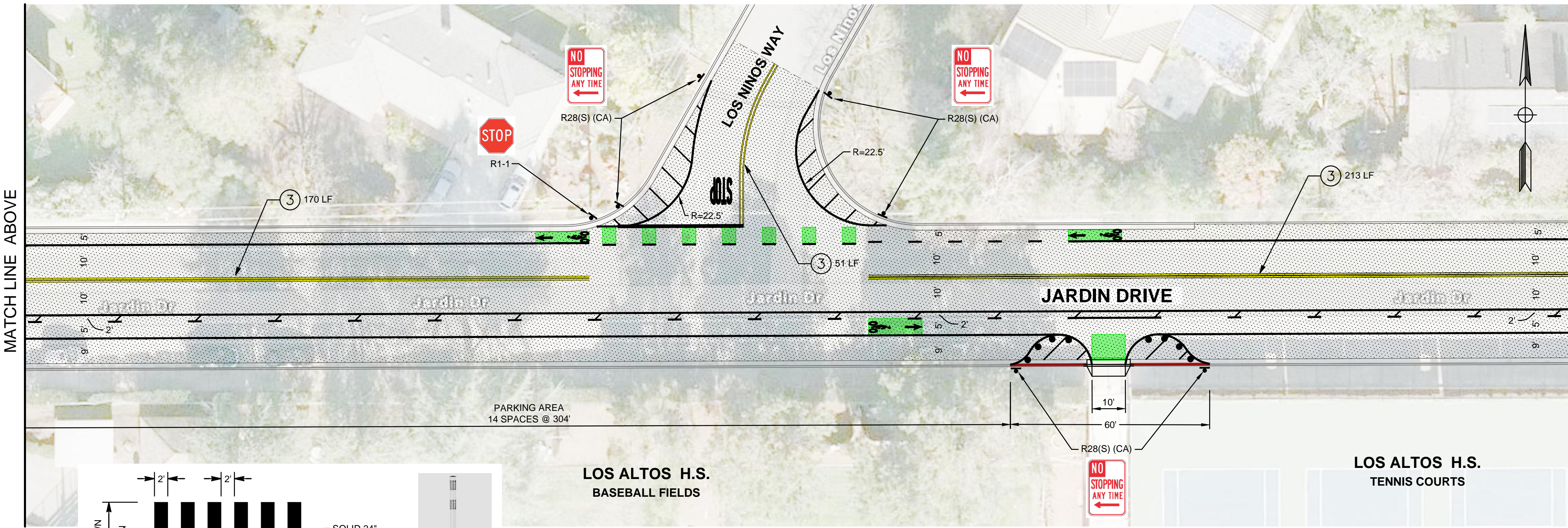
REVISIONS

| | |
|-----|-------------|
| No. | Description |
| | |
| | |
| | |

REGISTERED PROFESSIONAL ENGINEER
DONNA QURAI SHI (MTR)
No. 78192
EXP. 09-30-25
CIVIL
STATE OF CALIFORNIA

CITY OF LOS ALTOS
2024 ANNUAL STREET RESURFACING PROJECT
TS-01001, TS-01004, & TS-01009
IMPROVEMENT PLANS - JARDIN DRIVE
SANTA CLARA COUNTY CALIFORNIA

LOS ALTOS



PLAN
"JARDIN DRIVE"

MATCH LINE ABOVE

- LEGEND**
- LIMIT OF WORK LINE
 - CITY LIMIT LINE
 - [Pattern] REMOVE EXISTING STREET MARKING VIA GRINDING METHOD
 - STOP PAVEMENT MARKINGS
 - [Pattern] PAVEMENT STRIPING "NO STOPPING ANY TIME"
 - TRAFFIC DELINEATORS AT EVERY 5 FT, SEE DETAIL 2, SEE SHEET 4
 - ↑ SIGN ON POST
 - RED PAINT CURB "NO STOPPING ANY TIME"
 - [Symbol] BIKE LANE SYMBOL AND ARROW W/ GREEN PAINTED MARKING
 - [Symbol] GREEN PAINTED MARKING
 - ▼ YIELD LINES PAVEMENT MARKING
 - [Symbol] SHARROW PAVEMENT MARKING

AIM
REGISTERED PROFESSIONAL ENGINEER
FOR SAN JOAQUIN COUNTY
DRAWN M.C.
CHECKED D.A.
APPROVED D.A.
DATE 5/08/24
SCALE 1" = 20 FEET

CITY OF LOS ALTOS
2024 ANNUAL STREET RESURFACING PROJECT
TS-01001, TS-01004, & TS-01009
IMPROVEMENT PLANS - JARDIN DRIVE
SANTA CLARA COUNTY CALIFORNIA

LOS ALTOS

Drawing Number:
IP-1
4 OF 17

STRIPING LEGEND

| | | | |
|---|----------------------|--|--------------------------------|
| 1. STATE DETAIL 9 (MOD, TYPE C MARKER) | 8. STATE DETAIL 32 | 15. CHATTER BARS | 22. BIKE LOOP DETECTOR SYMBOL |
| 2. STATE DETAIL 12 (MOD, TYPE C MARKER) | 9. STATE DETAIL 37B | 16. RESERVED FOR FUTURE USE | 23. RESERVED FOR FUTURE USE |
| 3. STATE DETAIL 22 | 10. STATE DETAIL 38 | 17. SOLID 12" WHITE | 24. YIELD LINE |
| 4. RESERVED FOR FUTURE USE | 11. STATE DETAIL 39 | 18. SOLID 12" YELLOW | 25. GREEN PAVEMENT ENHANCEMENT |
| 5. STATE DETAIL 25 | 12. STATE DETAIL 39A | 19. SOLID 24" WHITE | 26. RESERVED FOR FUTURE USE |
| 6. STATE DETAIL 27B | 13. STATE DETAIL 38A | 20. STATE DETAIL 26 (MOD, 24" SPACING) | 27. SOLID 24" YELLOW |
| 7. STATE DETAIL 29 | 14. ARROWMESSAGES | 21. STATE DETAIL 40 | 28. STATE DETAIL 41 |

