

GreenTown Los Altos 2020 Internship

Climate Action Plan Suggestions

By: Anaïs Delagneau

Contents

1

Introduction and Scope of Work

Why we must prioritize a Climate Action Plan in 2020

2

Data Analysis

Evaluating Los Altos' CO2e emissions

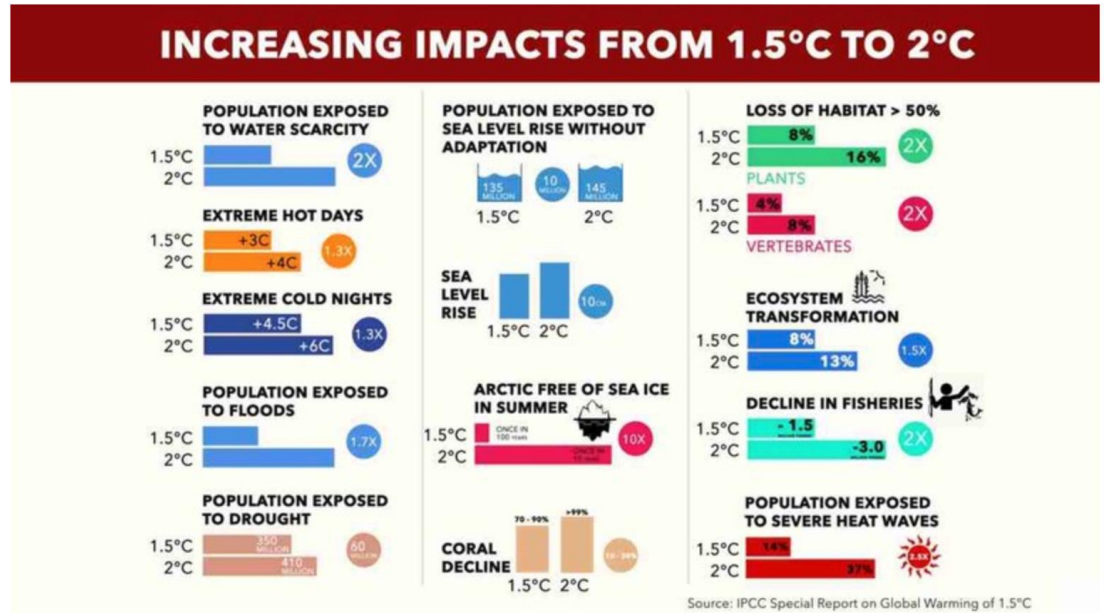
3

Suggestions

What we should try and put into action now or in the near future

Intro

- UNEP goal for 2030
 - 5 years
- UN warning for 2050



Scope of Work

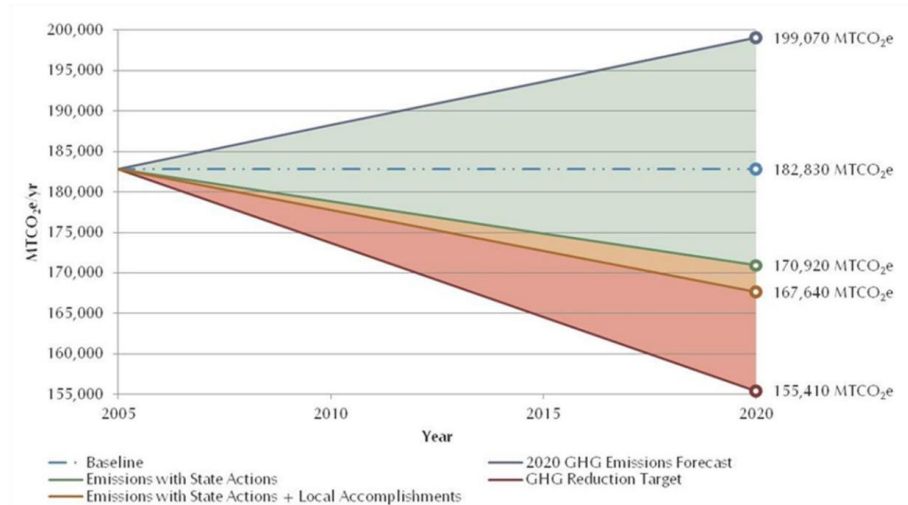
- Review Los Altos CAP from 2013
- Request GHG emissions data from SVCE
- Research local CAPs
- Identify key recommendations for CAP measures in each sector
- Propose next steps

A large green decorative shape on the left side of the slide, consisting of a large triangle pointing towards the bottom-left corner and a smaller rectangle attached to its right side.

Los Altos CAP (2013)

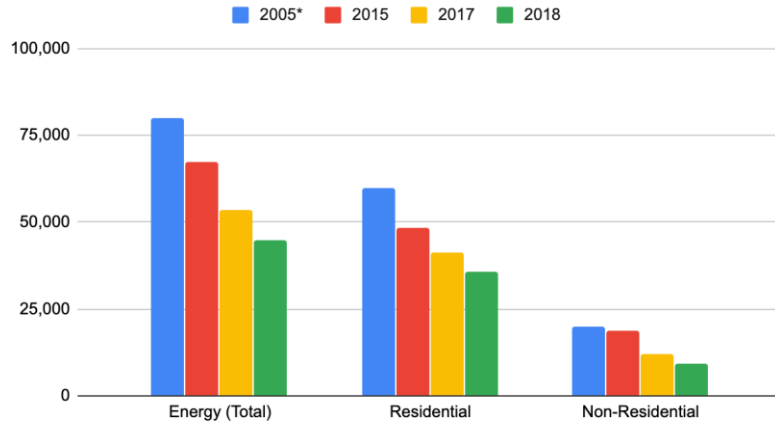
- Key takeaways
 - Emissions: 182,830 MT CO₂e
 - 17% reduction goal by 2020
 - 50% = local and state
 - 99% of emissions are community
 - Top emitters
 - Transportation
 - Energy

CAP 2013 Data

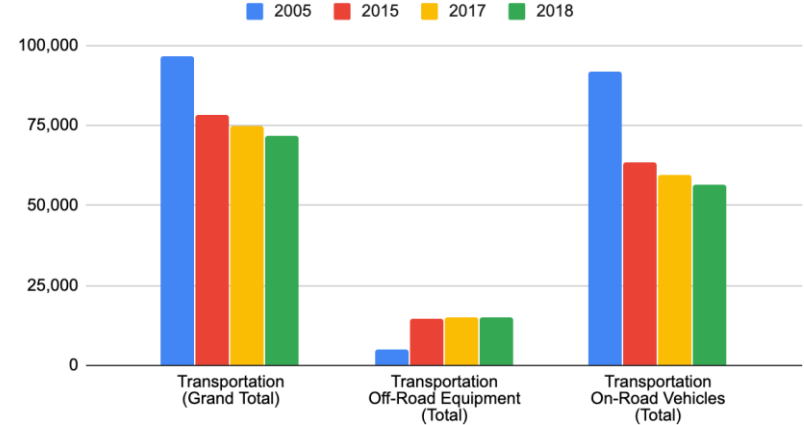


Data Analysis

Energy CO2e Emissions (MMTCO2e)



Transportation CO2e Emissions (MMTCO2e)



Research

Local CAPs

- Sunnyvale
- Mountain View
- Cupertino

Key Findings

- Mountain View
 - chart with emissions and pricing
- Sunnyvale
 - impact of SVCE
- Cupertino
 - detailed steps

Recommended Actions

Community and Municipal

1. Transportation
2. Residential Energy
3. Commercial Energy
4. Off-Road Equipment
5. Waste Disposal and Water
6. **NEW** *Extra Ideas*

Commercial Energy

- Building electrification
- Streamline retrofitting permit process
- Develop a Net-Zero pledge

Off-Road Equipment

- Trade-in/rebate program for landscaping equipment

Waste Disposal & Water

- Evaluate expansion of water reuse
- Community compost
- Expand plastic bag ban

Extra Ideas

- Community garden
- Expand voluntary tree planting
- Promote consumer awareness

Residential Energy

- Natural Gas
 - Develop heat pump program
 - Investigate utility tax
 - Offer rebates for fuel switching
- Solar PV Systems
 - Collaborate with SVCE for residential solar panel installation
 - Implement an outreach program
 - Investigate energy storage

Transportation

Electric Vehicles

- Incentivize EV adoption
- Expand Public EV charging stations
- Expand Private EV charging stations

Walk and Bike

- Bike Request Program
- Update Bicycle and Pedestrian Master Plans
- Parking strategies to discourage vehicle use

Commuters

- Implement Senior Shuttle
- School Bus Initiative
- Bike/ride share program

Suggested Next Steps

- Establish a subcommittee to review recommendations:
 - Further analyze priority CAP measures based on cost, time and impact
 - Research best practices for aggressive CAP
 - carbon neutrality
 - consumption-based inventory
- Survey Los Altos community for potential barriers and opportunities
- Pursue partnerships

MAKING GOODS WE USE GENERATES THE MAJORITY OF CONSUMPTION EMISSIONS

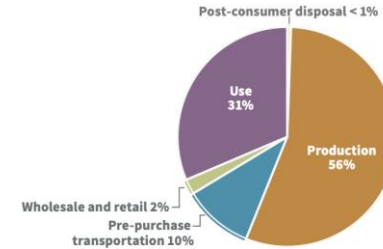
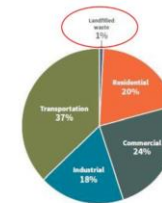


Figure 6. Multnomah County consumption-based carbon emissions by lifecycle phases (2011). Source: Portland Bureau of Planning and Sustainability

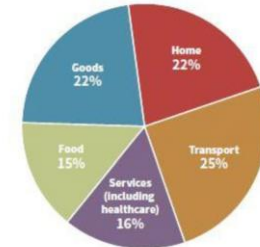
~ City of Portland ~

Traditional Sector-Based Inventory



7.7 MMTCO_{2e}

Consumption-Based Inventory



17.1 MMTCO_{2e}

Thanks!

Does anyone have any questions?

Credits

Presentation template by [Slidesgo](#)

Icons by [Flaticon](#)

Images & infographics by [Freepik](#)

Author introduction slide photo created by **katemangostar** - Freepik.com

Big image slide photo created by **jcomp** - Freepik.com

Text & Image slide photo created by **rawpixel.com** - Freepik.com

Text & Image slide photo created by **Freepik**