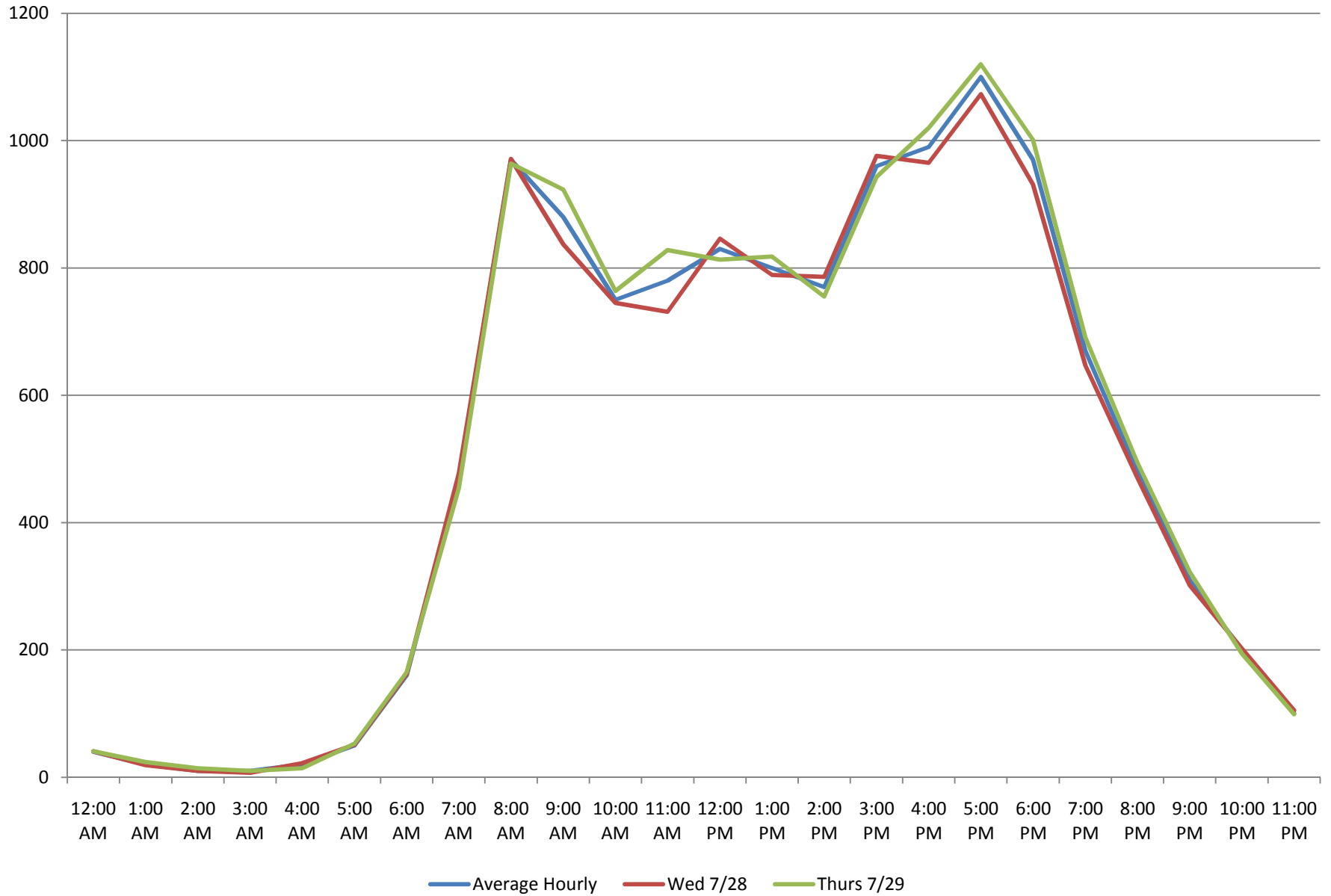


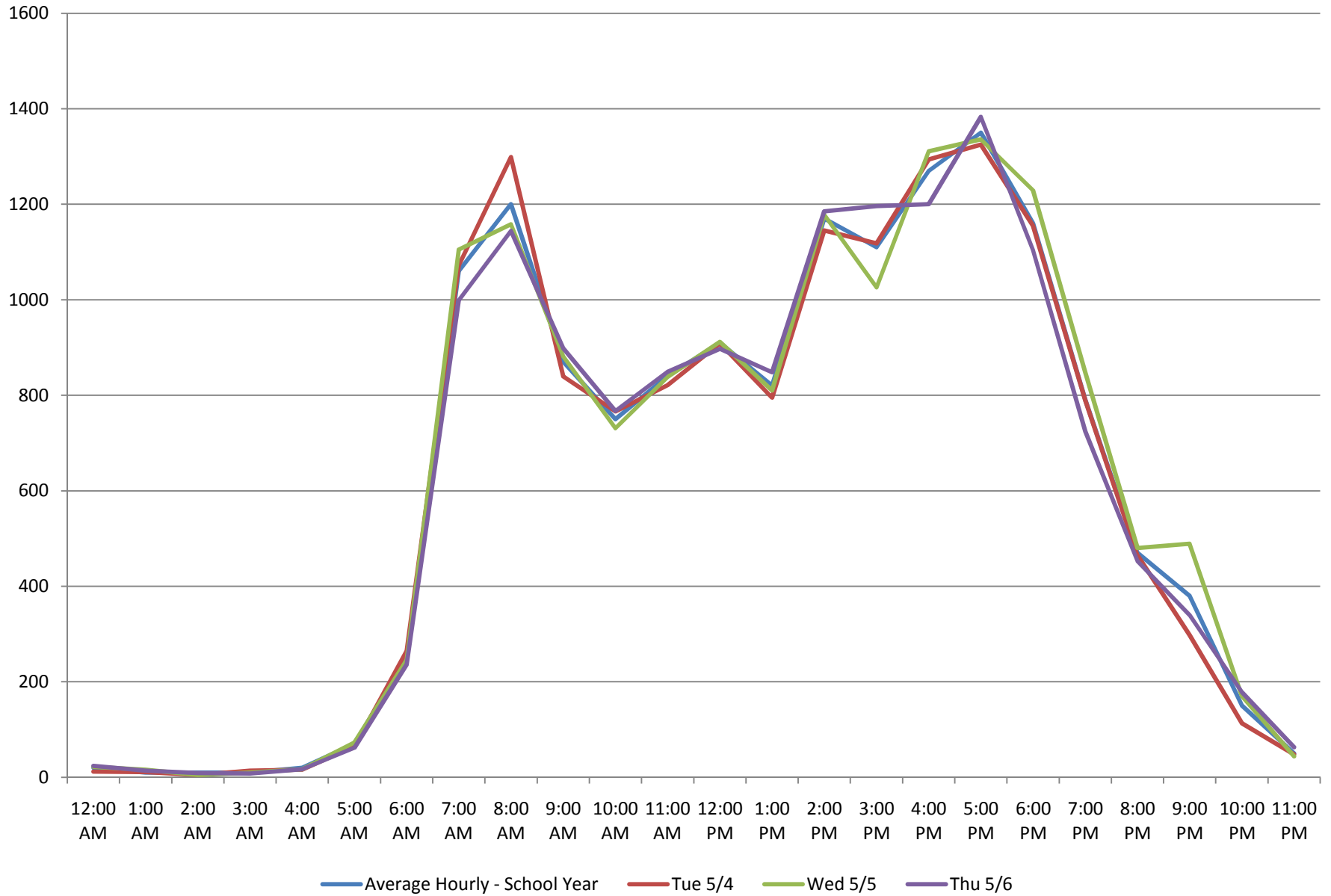


ATTACHMENT B
Seasonal Traffic Variation Summary

Miramonte / Covington Intersection Total Approach Volume

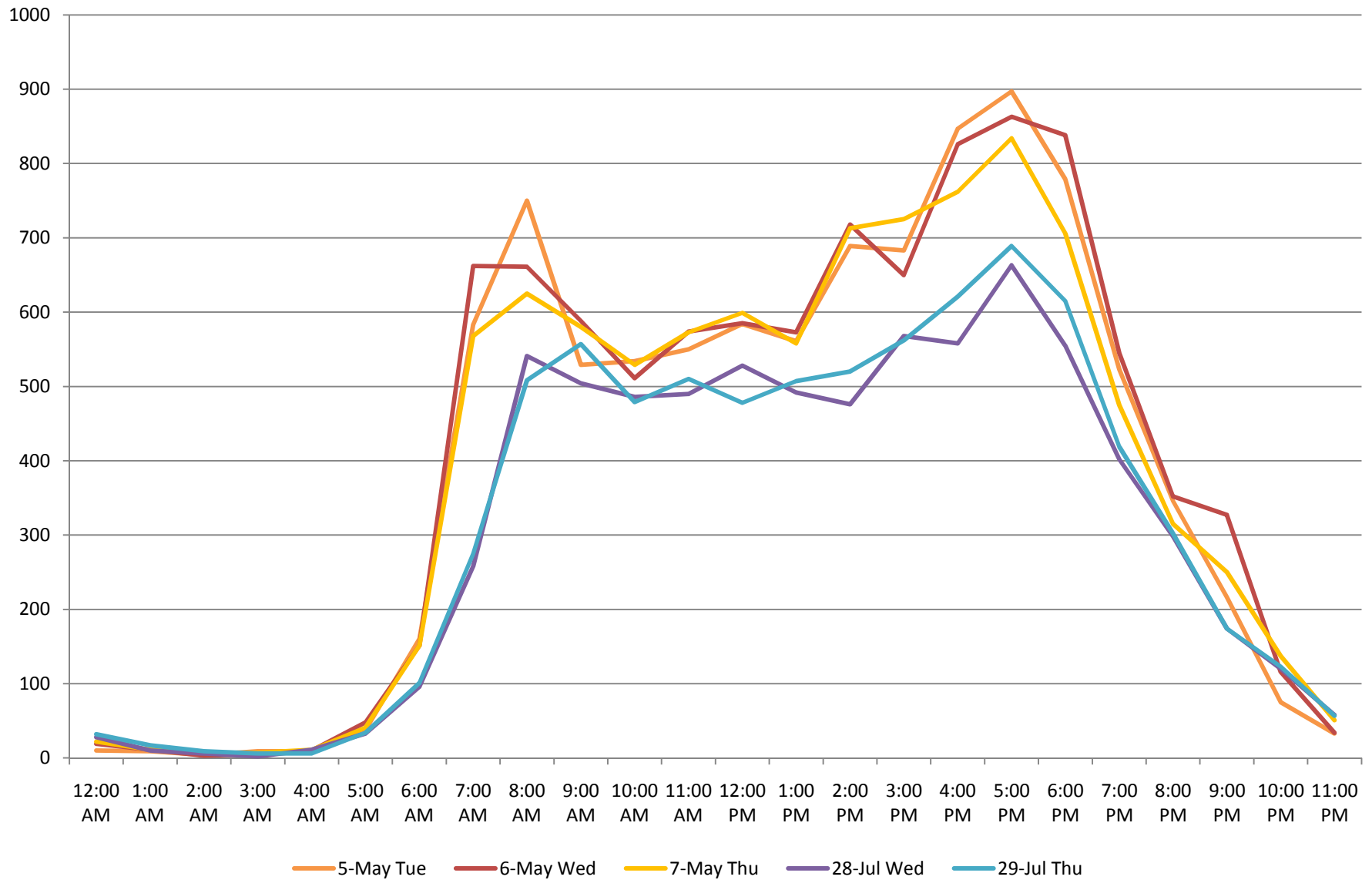


Miramonte / Covington Intersection Total Approach Volume



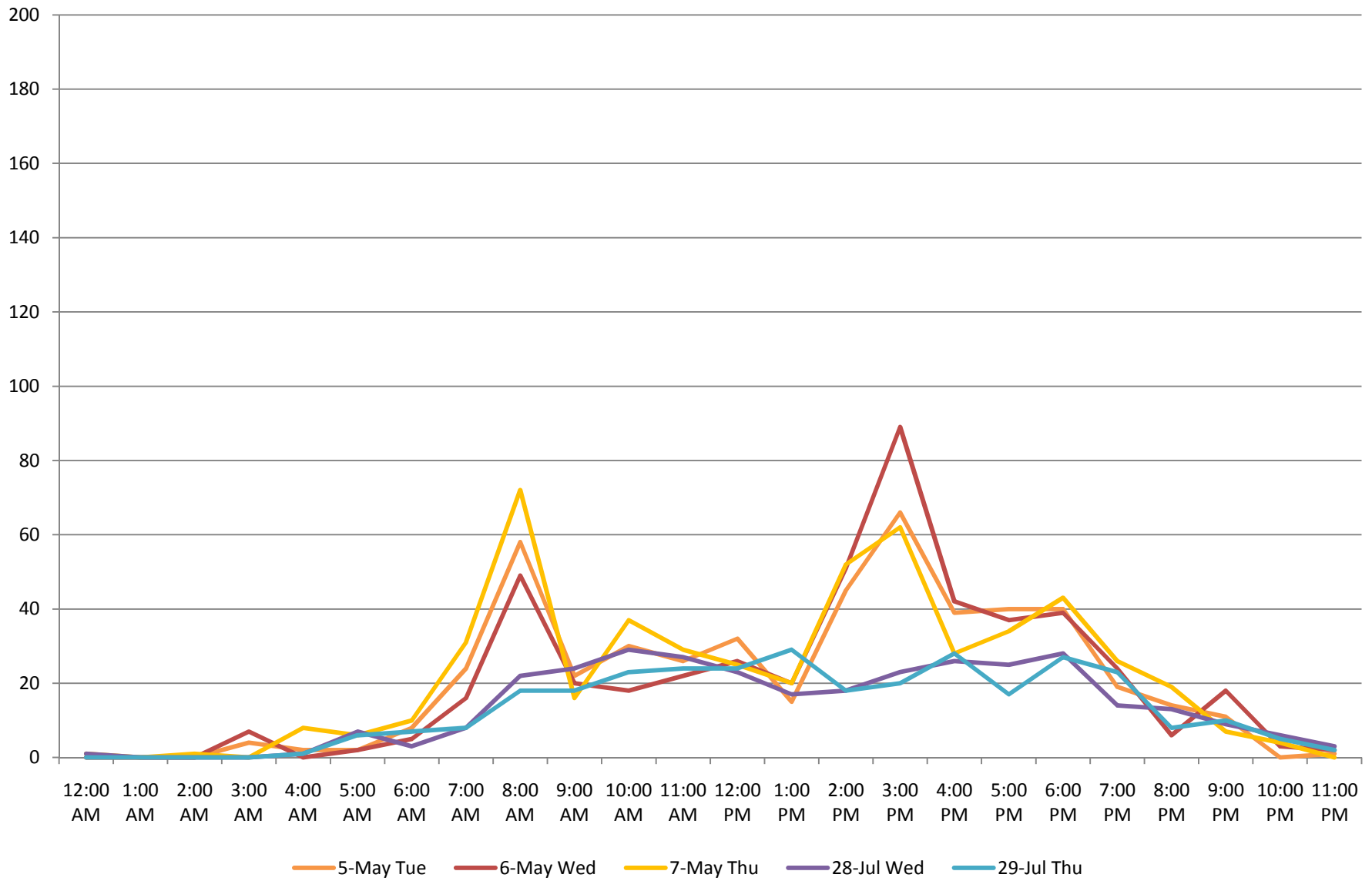
	School Yr	Summer		%
	3-day Avg	2-day Avg	Delta	Change
Daily Traffic Volumes				
Miramonte s/o Covington	9,446	7,479	1,967	-21%
Covngton e/o Miramonte	5,456	4,263	1,193	-22%
Portland e/o Miramonte	3,643	2,383	1,260	-35%
Altamead e/o Miramonte School	927	286	641	-69%
Eastwood	508	322	186	-37%
Carmel Terrace	518	282	236	-46%
AM Peak Period (7:00 - 9:00)				
Miramonte s/o Covington	1,283	791	492	-38%
Covngton e/o Miramonte	1,002	579	423	-42%
Portland e/o Miramonte	657	234	423	-64%
Altamead e/o Miramonte School	230	31	199	-87%
Eastwood	83	28	55	-66%
Carmel Terrace	164	28	136	-83%
Afternoon Peak Period (2:00-4:00)				
Miramonte s/o Covington	1,393	1,063	330	-24%
Covngton e/o Miramonte	896	607	289	-32%
Portland e/o Miramonte	618	320	298	-48%
Altamead e/o Miramonte School	201	37	164	-82%
Eastwood	122	40	82	-67%
Carmel Terrace	112	42	70	-63%
PM Peak Period (4:00 - 6:00)				
Miramonte s/o Covington	1,676	1,266	410	-24%
Covngton e/o Miramonte	964	727	237	-25%
Portland e/o Miramonte	572	389	183	-32%
Altamead e/o Miramonte School	139	46	93	-67%
Eastwood	73	48	25	-34%
Carmel Terrace	79	49	30	-38%

Miramonte s/o Covington - May / July Comparison 2-Way Volumes

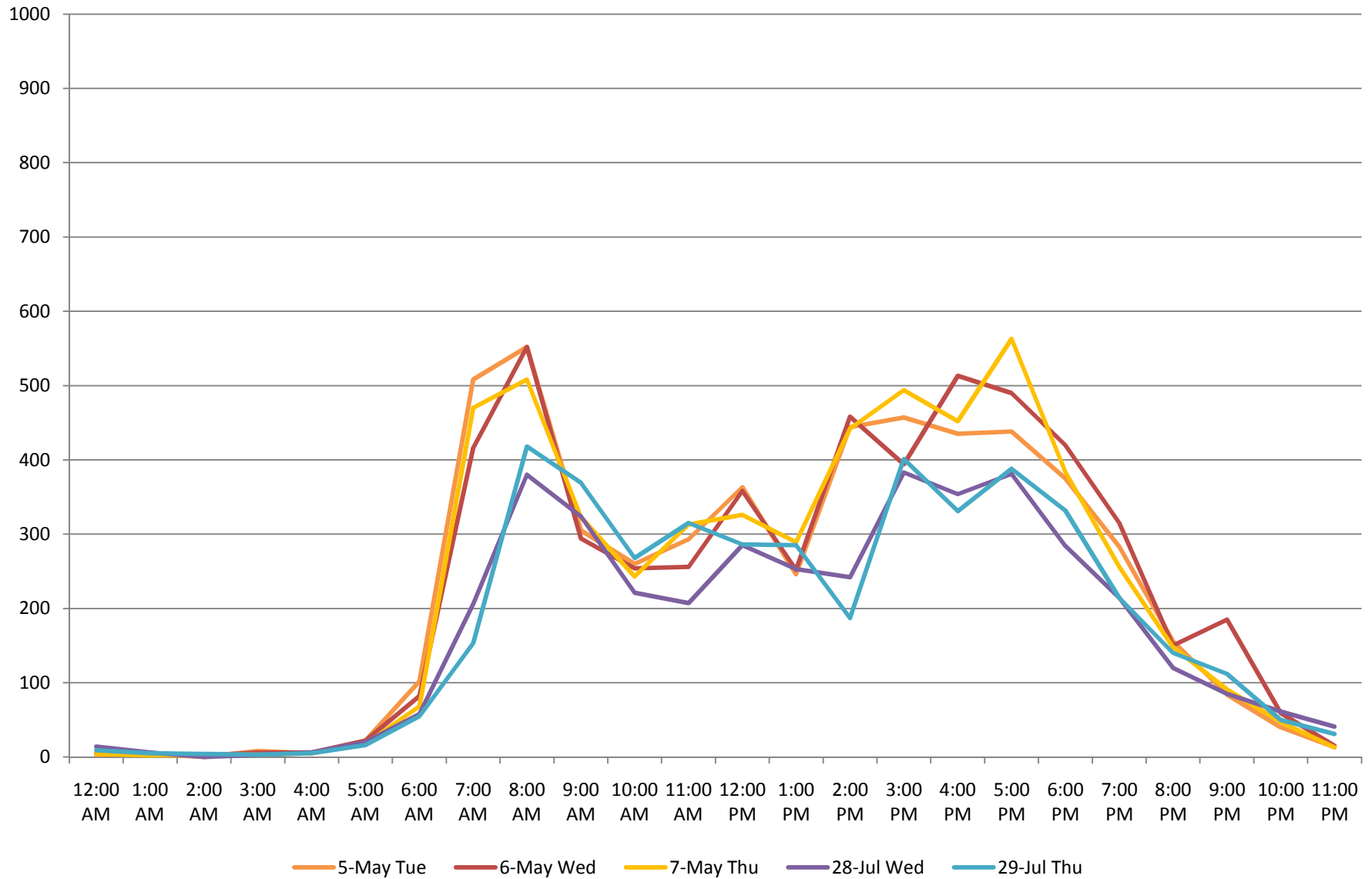


Eastwood May / July Comparison

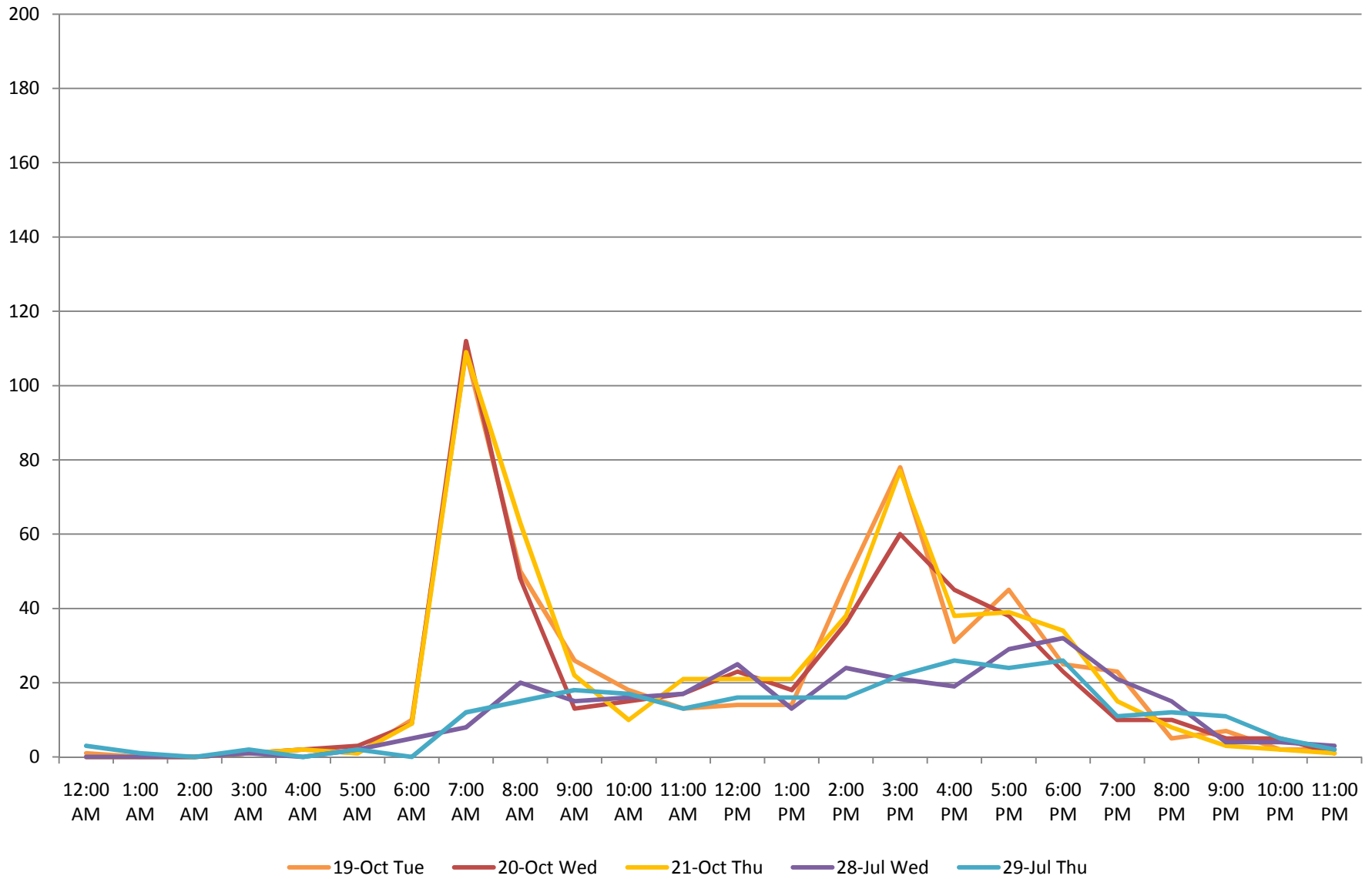
2-way Volumes



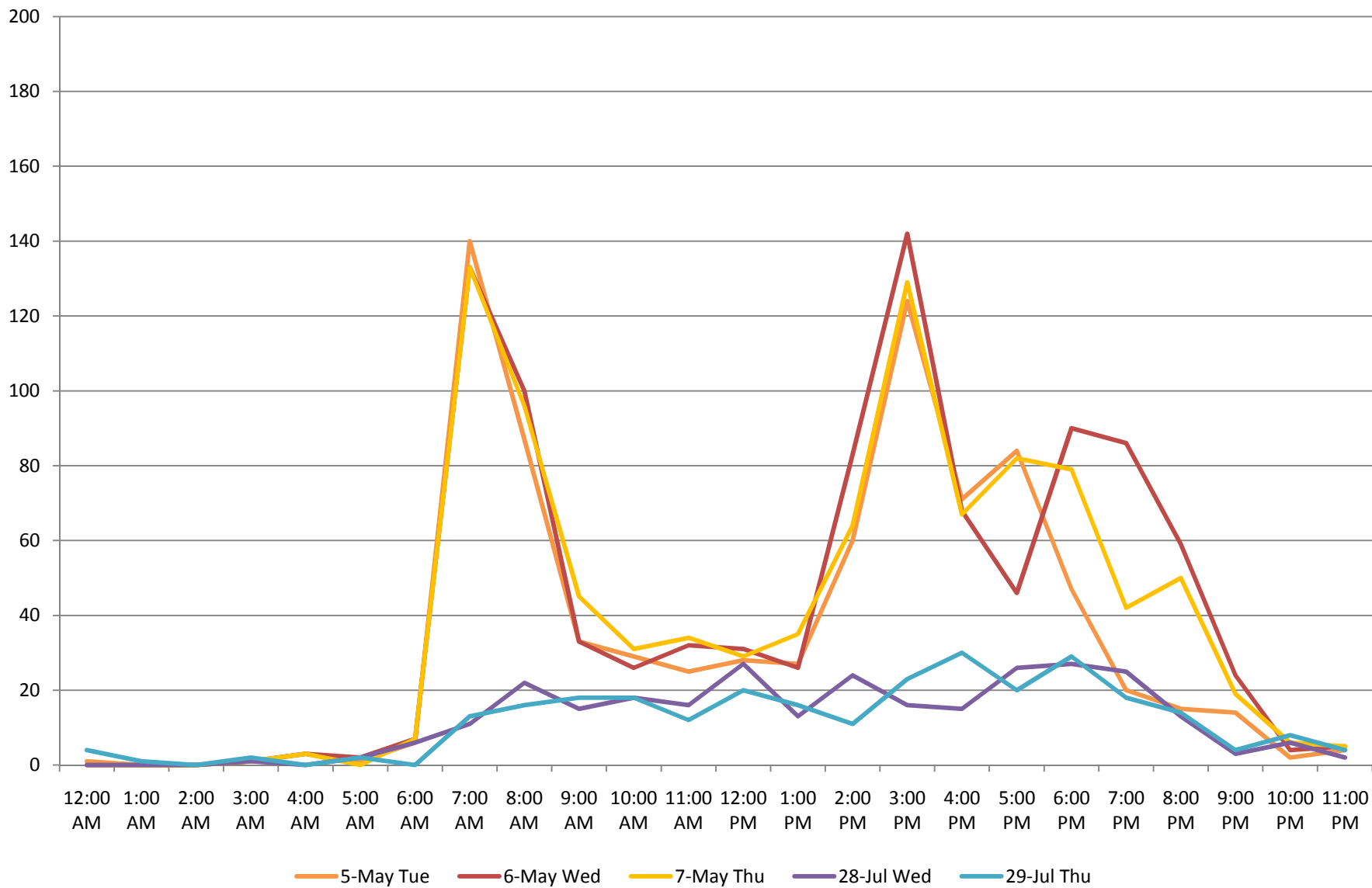
Covington e/o Miramonte - May / July Comparison 2-Way Volumes



Carmel Terrace October / July Comparison 2-Way Volumes



Altamead May / July Comparison 2-way Volumes



Portland e/o Miramonte - May / July Comparison 2-Way Volumes

